



# PROJECT REFERENCE

---

**SINGAPORE GENERAL HOSPITAL  
REDEVELOPMENT.**

# GOVERNMENT PROJECT.

## Singapore General Hospital Redevelopment

Slated for completion in 2026, the \$886m (SGD) project offers compelling lessons for global healthcare leaders navigating ageing populations, capacity pressures and the urgent need to future-proof critical infrastructure for decades to come. Ground was broken for this project in 2020, with the existing infrastructure stills treating nearly 800,000 outpatients and 90,000 inpatients annually throughout the critical care hospital.

The Elective Care Centre (ECC), developed by Penta-Ocean Construction Co.Ltd and designed by DP Architects, is a purpose-built medical facility located within the Singapore General Hospital (SGH) campus. By creating a centre that focuses on non-emergency surgeries, this ideally frees up resources in the main hospital for emergency cases and complex procedures. The development also houses the new National Dental Centre Singapore (NDCS), which leverages advanced technologies to provide more efficient, high-quality patient care, with design considerations tailored to the needs of elderly patients.

Both facilities form a key part of Singapore General Hospital's broader Master Plan, supporting the planned expansion and future readiness of its healthcare infrastructure and services. With the construction of ECC & NDCS establishing a key urban axis to achieve a fully integrated, patient-focused medical campus, moving high-volume services closer to Outram Park MRT station, therefore, placing a significant emphasis on connectivity and accessibility in the region.





## PROJECT BREAKDOWN.

*Client | Ministry of Health, Singapore*

The Ministry of Health (MOH) specifies Kembla copper for Singapore's healthcare facilities as our copper continues delivery of predictable and durable solutions at scale; critical characteristics, particularly in the healthcare domain. A MOH representative disclosed,

“

*Patient safety is always our top priority. Kembla copper tube offers proven long-term reliability and audit comfort built in. This proves critical in all our high-risk healthcare environments and is why the team approved Kembla copper tube.*

”

# Developer | Penta-Ocean Construction Co.Ltd

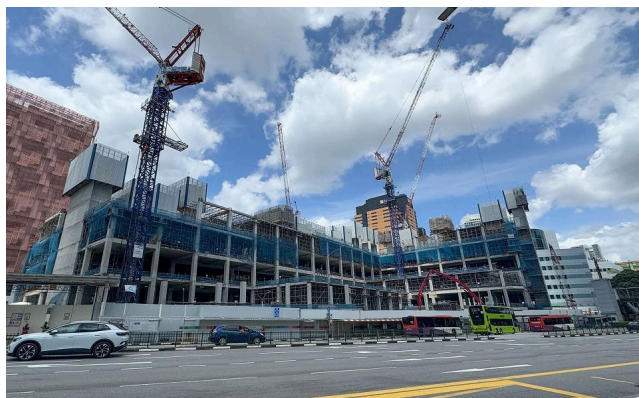
As a key contractor on major infrastructure and redevelopment projects across Singapore and the region, 130-year old Japanese contractor Penta-Ocean Construction Co., Ltd. played a central role in delivering the Singapore General Hospital (SGH) campus redevelopment, supporting a future-ready healthcare precinct designed for long-term community needs.

With over a century of experience, Penta-Ocean brings deep capability across marine engineering, civil infrastructure and large-scale building delivery. From complex healthcare environments to major transport and reclamation works, the company is recognised for combining engineering excellence with innovation and sustainable construction practices.

At the core of the development is the Elective Care Centre (ECC), improving patient flow and the National Dental Centre Singapore (NDCS), a specialist facility featuring advanced clinical technologies and patient-centred design, with accessibility and ageing population needs embedded throughout.

***“We are driven by a pioneering spirit, advancing construction through digital transformation and green transformation, whilst integrating AI, robotics and smart construction to improve efficiency, sustainability and project outcomes.”***

By leveraging Kembla’s copper tube project-specific warranty, Penta-Ocean will minimise risk, particularly with safe and hygienic transmission of medical gases, medical suction and vacuum lines and therefore, provide greater certainty across the project. In specifying MM Kembla’s Kembla Copper within its integrated piping systems, a larger portion of the installation was backed by one trusted brand, one expert team and a single, end-to-end warranty, delivering confidence before, during and long after installation was complete.



PROJECT REFERENCE



# Installer | APP Engineering

APP Engineering were appointed HVAC-R and plumbing contractors to the development of the Elective Care Centre & National Dental Centre.

Established in 1979, APP Engineering is a Singapore-based, integrated building services provider delivers high-quality Mechanical & Electrical (M&E) engineering solutions across complex construction and infrastructure projects. Specialising in mechanical, electrical and plumbing (MEP) engineering design and project management, APP Engineering offers a whole-system approach encompassing sustainability and green building design, BIM, facilities management and innovative HVAC solutions.

On the Elective Care Centre & National Dental Centre, APP Engineering installed a significant volume of **Kembla copper tube** across key building M&E systems. The specification of Kembla products reflects APP Engineering's commitment to reliability, long-term performance and best-practice outcomes in critical healthcare environments.

“

*Kembla copper as a solution allowed [APP Engineering] to deliver a fit-for-purpose plumbing system across the precinct efficiently, supporting both operational excellence and patient-centric care for the SGH campus.*

”

Driven by a vision to be synonymous with quality, excellent service and best value, APP Engineering continues to invest in its people, technology and innovation to create a safe, inclusive workplace while consistently delivering outstanding results for clients.



Ultimately, Penta-Ocean described landing on Kembla copper tube because of its low-risk, durability and proven piping solution making it suitable for their large-scale medical facilities where patient safety, compliance, and lifecycle certainty are paramount.

By using **Kembla copper tube**, Penta-Ocean notes the beneficial nature of:

- *Proven, long-term reliability across high-demand medical services*
- *Maintain hygienic transmission to patients, preventing gas contamination and spontaneous combustion of residual lubricant under pressure*
- *Enhanced patient safety and compliance through material traceability*
- *Reduced lifecycle risk and maintenance complexity*
- *Support in including technical guidance and project warranty*

The aligning of MM Kembla, for MOH Singapore, Penta-Ocean and APP Engineering, was a clear choice due to the nature of the job and shared values for innovative, effective, and efficient systems that will assist in lasting infrastructure.

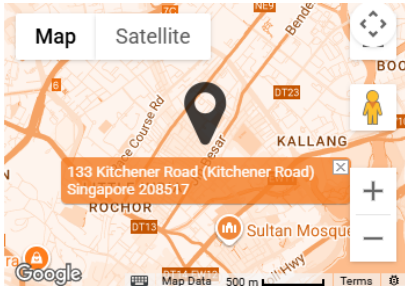
Curious about more of our latest project involvement? Check out recent Kembla installations from healthcare centres to offices, to public housing on our case studies web page.

For more information or to discuss MM Kembla's range of integrated piping systems, project warranties, or on-site training and technical assistance, get in touch via the relevant contact information on the next page or via our Contact Us website page.

# CONTACT INFORMATION.

## INTERNATIONAL LOCATIONS (1/2)

### Singapore



Liang Chew Hardware  
133 Kitchener Road  
Singapore 208517

+65 6296 0224  
+65 9137 1409 (WhatsApp)  
sales@liangchew.com

### Hong Kong/China



Kembla (HK) Limited  
5/F Henan Building  
90 Jaffe Road  
Wanchai  
Hong Kong

+852 2528 0999  
+852 2528 3113  
info@kembla.com.hk

### Thailand



Porn Prom Metal Public Co Ltd  
Porn Prom Building  
229 Ratchasima Road  
Dusit, Bangkok 10300  
Thailand

+660 2628 6100  
+660 2628 8591  
chamnarn@ppm.co.th

### Indonesia



PT Dian Cempaka / PT Griya Karsa  
Ruko Mega Grosir Cempaka  
Mas Blok J No. 7  
Jl. LetJend Suprpto  
Jakarta Pusat, Indonesia

+62 21 4288 0618  
+62 21 4288 0620  
dian.cempaka@yahoo.co.id

### Malaysia



H. Rogers (Malaysia) Sdn Bhd  
H-93-2, Block H, Jaya One  
No. 72A Jalan Universiti  
46200 Petaling Jaya  
Selangor Darul Ehsan  
Malaysia

+603 7960 3831  
+603 7960 4831  
info@hrogers.my

### Middle East



Leminar Global Distribution & Services W.L.L  
P.O. Box 3841  
Doha, Qatar

+974 4402 4555  
infoqatar@leminar.net

Arabi Company W.L.L  
P.O. Box 4090  
Safat 13041, Kuwait

+965 24724057/58  
+965 24724059  
sales@arabicompany.net

### Vietnam



H.T.M Medical Equipment Services & Trade Joint Stock Company  
No.40, Lane 80 Luong Dinh Cua,  
Phuong Mai Ward  
Dong Da District  
Ha Noi City  
Vietnam

(+84-4) 3550 1775  
(+84-4) 3550 1776  
saleshtmequip@gmail.com

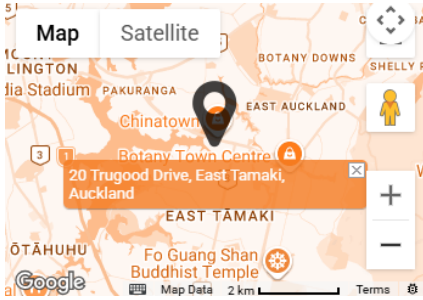
IDS Medical Systems  
77 Tran Nhan Ton  
Phuong 9, Quan 5  
Ho Chi Minh  
Vietnam

1800 0028  
marcom@idsmed.com

# CONTACT INFORMATION.

## INTERNATIONAL LOCATIONS (2/2)

### New Zealand, Head Office



MM Brands  
263 Ti Rakau Drive, East Tamaki  
Auckland  
New Zealand

+649 274 0111

+649 274 0347

john.alexander@mbrands.co.nz

John Alexander - Country Manager

### New Zealand, South Island



9 Syd Bradley Road, Dakota Park  
Christchurch Airport  
Christchurch  
New Zealand

+649 274 0111

+649 274 0347

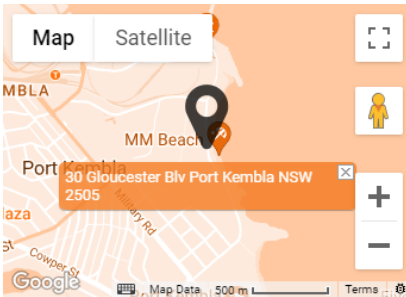
john.alexander@mbrands.co.nz

John Alexander - Country Manager

# CONTACT INFORMATION.

## AUSTRALIA

### Head Office, Manufacturing Plant & Warehouse



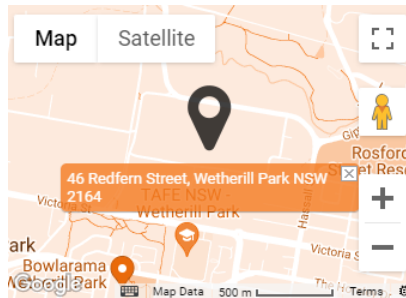
30 Gloucester Boulevard  
Port Kembla NSW 2505  
PO Box 21  
Port Kembla NSW 2505

☎ 1800 804 631  
☎ 1800 817 846  
✉ sales@kembla.com.au

For any other  
international or  
export enquiries



### New South Wales

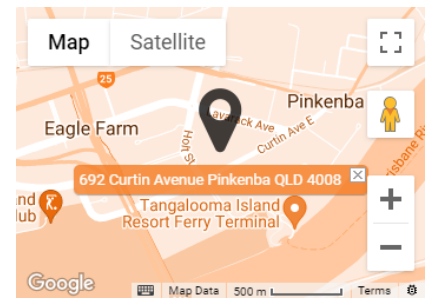


Unit 1, 46 Redfern Street  
Wetherill Park NSW 2164

☎ 1800 804 631  
☎ 1800 817 846  
✉ simon.easter@kembla.com.au

Simon Easter - NSW Sales Manager

### QLD/NT

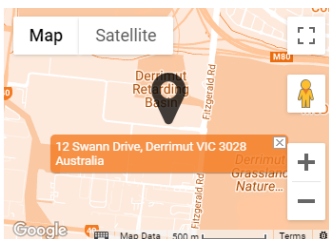


Building A, 692 Curtin Avenue  
Pinkenba QLD 4008  
PO Box 208  
Pinkenba QLD 4008

☎ 1800 804 631  
☎ 1800 817 846  
✉ adrian.jackson@kembla.com.au  
✉ craig.hudson@kembla.com.au

Adrian Jackson - QLD & NT (Regional)  
Sales Manager  
Craig Hudson - SEQ Territory Manager

### Victoria

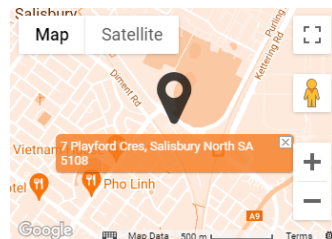


12 Swann Drive (Warehouse)  
Derrimut VIC 3028  
PO Box 41  
Laverton VIC 3028

☎ 1800 804 631  
☎ 1800 817 846  
✉ phillip.russo@kembla.com.au

Phillip Russo - VIC/TAS Sales  
Manager

### South Australia

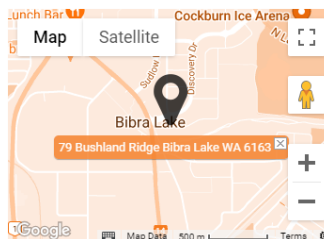


7 Playford Crescent  
Salisbury SA 5108  
PO Box 108  
Kilkenny SA 5009

☎ 1800 804 631  
☎ 1800 817 846  
✉ matt.semple@kembla.com.au

Matt Semple - SA/WA Sales  
Manager

### Western Australia

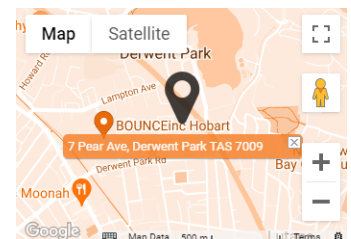


2/79 Bushland Ridge  
Bibra Lake WA 6163

☎ 1800 804 631  
☎ 1800 817 846  
✉ matt.semple@kembla.com.au

Matt Semple - SA/WA Sales  
Manager

### Tasmania



Crisp Ikin Agencies (CIA)  
7 Pear Avenue  
Derwent Park TAS 7009

☎ 1800 804 631  
☎ 1800 817 846  
✉ phillip.russo@kembla.com.au

Phillip Russo - VIC/TAS Sales  
Manager