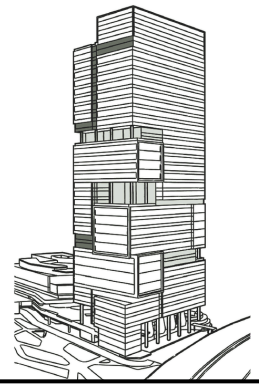




PROJECT REFERENCE

Labrador Tower Singapore

COMMERCIAL PROJECT. Labrador Tower Singapore



Labrador Tower is Singapore's newest waterfront office development, representing a new generation of conscious office engineering, where sustainability, connectivity and workplace wellness are at the heart of the design. The recently completed SGD \$400m project was led by an accomplished team of industry leaders in the region, designed by B+H Architects and Surbana Jurong Group, landscaped by Grant Associates and constructed by Greater Resources M&E. Located just 10 minutes from the CBD and a short stroll from MRT stations and bus stops, the tower provides hyper-connected, light-filled office spaces with flexible layouts and impressive sea views.



Adjacent to the Berlayer Creek Boardwalk, the development integrates landscaped areas to encourage work-life balance and connection with nature. Achieving **Green Mark Platinum Super Low Energy certification**, Labrador Tower utilises Singapore Power (SP) Group's sustainable energy solutions to optimise energy efficiency, reduce operational costs, and deliver long-term sustainable performance.



Project Overview

Client: Singapore Power Group

Contractor: Great Resources M&E

Project Value: SGD 400 million

Kembla System Value:

Installed Kembla Copper Tube in piping systems

Status: Completed





PROJECT BREAKDOWN.

Execution team - Architects

Surbana Jurong Group, with over 70 years of experience in urban planning, infrastructure and managed services consulting, served as project architect, ensuring every aspect of the LT design met Singapore's rigorous standards, including full adherence to piping codes with MM Kembla copper tube.

The design was further brought to life by B+H Architects, a global consulting and design firm with a 65-year legacy of creating transformative, functional, and inspiring spaces. Furthermore, landscaped areas were crafted by Grant Associates, an international landscape architecture practice dedicated to reconnecting people with nature in thoughtful and innovative ways.

Developer

Led by Singapore Power (SP) Group, a leading utilities group in the Asia Pacific, who provided the sustainable energy solutions that helped the development achieve Green Mark Platinum Super Low Energy certification. After presenting our tailored solutions, Kembla project specific warranties and a fixed price at design stage; SP Group specified MM Kembla's inclusive and high-quality, Green A certified and excellent thermal conductive integrated piping system for this high profile, sustainable office development.

Specifying MM Kembla to supplying over 65 tonnes of **Kembla copper tube** to not only complete the Labrador Tower, but ensure reliable, compliant, and energy-efficient plumbing and HVAC infrastructure throughout the building. A SP representative emphasises,

“

In [Singapore Power's] engineering culture, certainty outweighs novelty. MM Kembla copper delivers long-term performance and minimises lifecycle risk, making it the right choice for a project of this magnitude.

”

By integrating **Kembla copper tube**, the project benefited from on-going compliance assurance, meeting the building's critical infrastructure requirements and long-term reliability, supporting Labrador Tower's mission to deliver a green, connected, and wellness-focused office environment. Kembla copper was chosen for its proven reliability, low lifecycle risk, and compliance with fire, electrical, and durability standards.

“

For a building of this scale and significance, reliability is paramount. Kembla copper provides us with traceability, compliance, and the proven history to go with it.

”

THE INSTALLATION.

Contractor

The plumbing and mechanical services were delivered by Great Resources M&E, one of Singapore's leading mechanical and electrical engineering firms.

Great Resources were able to rely on MM Kembla for project-specific warranties, on-site support and supply chain guarantees, to help minimise risk and ensure smooth delivery. M&E plumbers and HVAC installers benefitted from the high-quality **Kembla copper tube** on the mechanical services of the Labrador Tower.

MM Kembla's ability to deliver reliably at scale meant the teams could focus on installation quality rather than worrying about material delays and on-going headaches. This level of support reinforces the confidence of plumbers and Great Resources M&E contractors in delivering a project of this complexity, while ensuring the infrastructure will stand the test of time. SP Group representative further amplified,

“

The Kembla system was chosen for its proven reliability, compliance with fire and electrical standards and ease of installation which made it an ideal solution for Great Resources M&E and their teams on-site.

”

The combination of Kembla's trusted product performance and responsive support allowed the teams to maintain a high standard of workmanship from concept to completion. For SP and Great Resources M&E, choosing the right product protects their highly regarded reputation as industry leaders.

PROJECT REFERENCE



PROJECT OUTCOMES.

- Sustainable, cost-efficient operations via Green Mark Platinum Super Low Energy certification
- Critical infrastructure reliability supported by proven copper piping solutions
- A traceable, compliant, low-risk system optimised for long-term performance
- Integrated support and project warranty from MM Kembla
- MM Kembla's inventory agility and global supply chain strength helped reduce the risk of project delays, delivering financial certainty for clients amid ongoing global supply disruptions.

Consequently, this newly completed LT development is expected to be a landmark on Singapore's waterfront as commercial towers begin filling with eager and ambitious businesses looking for sustainable, connected and wellness-focused office spaces.

Curious about more of our latest projects? Check out recent Kembla installations from offices to healthcare centres, to public housing under case studies on our website.

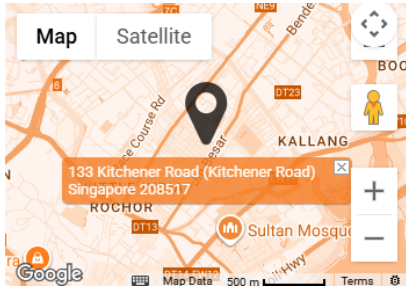
For more information or to discuss MM Kembla's range of integrated piping systems, project warranties, or on-site training and technical assistance get in touch via the relevant contact information on the next page.



CONTACT INFORMATION.

INTERNATIONAL LOCATIONS (1/2)

Singapore



Liang Chew Hardware
133 Kitchener Road
Singapore 208517

+65 6296 0224
+65 9137 1409 (WhatsApp)
sales@liangchew.com

Hong Kong/China



Kembla (HK) Limited
5/F Henan Building
90 Jaffe Road
Wanchai
Hong Kong

+852 2528 0999
+852 2528 3113
info@kembla.com.hk

Thailand



Porn Prom Metal Public Co Ltd
Porn Prom Building
229 Ratchasima Road
Dusit, Bangkok 10300
Thailand

+660 2628 6100
+660 2628 8591
chamnarn@ppm.co.th

Indonesia



PT Dian Cempaka / PT Griya Karsa
Ruko Mega Grosir Cempaka
Mas Blok J No. 7
Jl. LetJend Suprpto
Jakarta Pusat, Indonesia

+62 21 4288 0618
+62 21 4288 0620
dian.cempaka@yahoo.co.id

Malaysia



H. Rogers (Malaysia) Sdn Bhd
H-93-2, Block H, Jaya One
No. 72A Jalan Universiti
46200 Petaling Jaya
Selangor Darul Ehsan
Malaysia

+603 7960 3831
+603 7960 4831
info@hrogers.my

Middle East



Leminar Global Distribution & Services W.L.L
P.O. Box 3841
Doha, Qatar

+974 4402 4555
infoqatar@leminar.net

Arabi Company W.L.L
P.O. Box 4090
Safat 13041, Kuwait

+965 24724057/58
+965 24724059
sales@arabicompany.net

Vietnam



H.T.M Medical Equipment Services & Trade Joint Stock Company
No.40, Lane 80 Luong Dinh Cua,
Phuong Mai Ward
Dong Da District
Ha Noi City
Vietnam

(+84-4) 3550 1775
(+84-4) 3550 1776
saleshtmequip@gmail.com

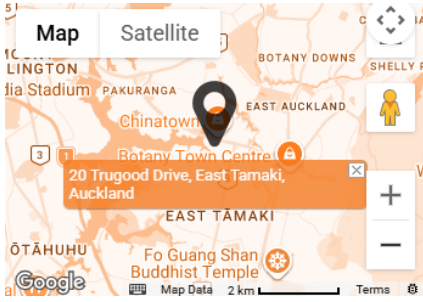
IDS Medical Systems
77 Tran Nhan Ton
Phuong 9, Quan 5
Ho Chi Minh
Vietnam

1800 0028
marcom@idsmed.com

CONTACT INFORMATION.

INTERNATIONAL LOCATIONS (2/2)

New Zealand, Head Office



MM Brands
263 Ti Rakau Drive, East Tamaki
Auckland
New Zealand

+649 274 0111
+649 274 0347
john.alexander@mbrands.co.nz

John Alexander - Country Manager

New Zealand, South Island



9 Syd Bradley Road, Dakota Park
Christchurch Airport
Christchurch
New Zealand

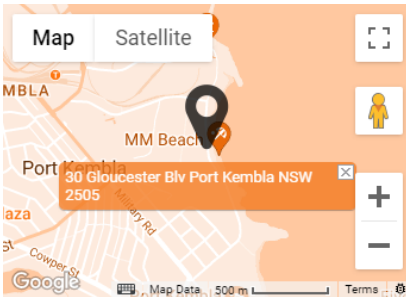
+649 274 0111
+649 274 0347
john.alexander@mbrands.co.nz

John Alexander - Country Manager

CONTACT INFORMATION.

AUSTRALIA

Head Office, Manufacturing Plant & Warehouse



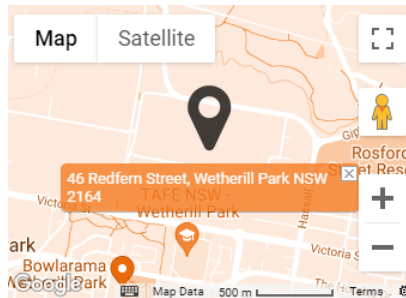
30 Gloucester Boulevard
Port Kembla NSW 2505
PO Box 21
Port Kembla NSW 2505

☎ 1800 804 631
☎ 1800 817 846
✉ sales@kembla.com.au

For any other
international or
export enquiries



New South Wales

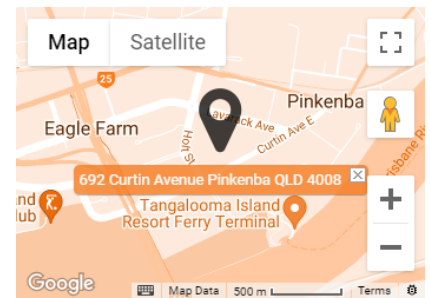


Unit 1, 46 Redfern Street
Wetherill Park NSW 2164

☎ 1800 804 631
☎ 1800 817 846
✉ simon.easter@kembla.com.au

Simon Easter - NSW Sales Manager

QLD/NT

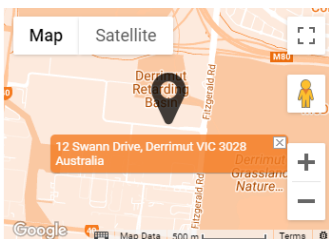


Building A, 692 Curtin Avenue
Pinkenba QLD 4008
PO Box 208
Pinkenba QLD 4008

☎ 1800 804 631
☎ 1800 817 846
✉ adrian.jackson@kembla.com.au
✉ craig.hudson@kembla.com.au

Adrian Jackson - QLD & NT (Regional)
Sales Manager
Craig Hudson - SEQ Territory Manager

Victoria

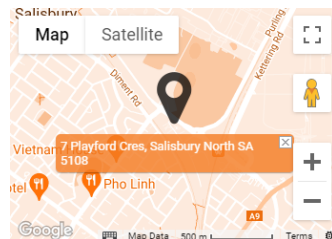


12 Swann Drive (Warehouse)
Derrimut VIC 3028
PO Box 41
Laverton VIC 3028

☎ 1800 804 631
☎ 1800 817 846
✉ phillip.russo@kembla.com.au

Phillip Russo - VIC/TAS Sales
Manager

South Australia

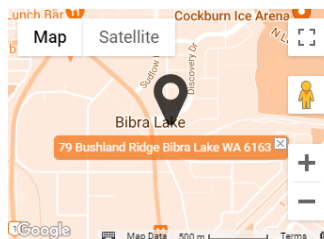


7 Playford Crescent
Salisbury SA 5108
PO Box 108
Kilkenny SA 5009

☎ 1800 804 631
☎ 1800 817 846
✉ matt.semple@kembla.com.au

Matt Semple - SA/WA Sales
Manager

Western Australia

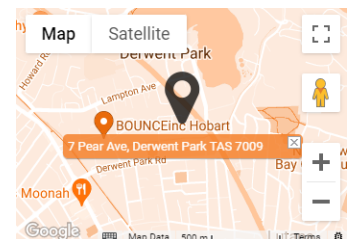


2/79 Bushland Ridge
Bibra Lake WA 6163

☎ 1800 804 631
☎ 1800 817 846
✉ matt.semple@kembla.com.au

Matt Semple - SA/WA Sales
Manager

Tasmania



Crisp Ikin Agencies (CIA)
7 Pear Avenue
Derwent Park TAS 7009

☎ 1800 804 631
☎ 1800 817 846
✉ phillip.russo@kembla.com.au

Phillip Russo - VIC/TAS Sales
Manager